



In-wall speakers
In-ceiling speakers
All weather Multi-box speakers



IN-CEILING SPEAKERS



IC 116



IW 125i



IW 126i



NEW!
Slim
frame

IC 426



NEW!
Slim
frame

IC 428

Using the DLS coaxial technology we have been able to design a very good speaker at a surprisingly affordable price. With the good off-axis sound it's perfect to place where you simply want to listen to quality sound, but you are not currently experiencing it. Let's say when you're entertaining guests on your terrace, taking a shower, or cooking dinner. That's where they does its job best, in any public space – a café, a shop or an office.

MORE FACTS:

Model	IC116	IW125i	IW126i	IC426	IC428
Size / type	6,5" / 2-way coaxial	5,25" / 2-way coaxial	6,5" / 2-way coaxial	6,5" / 2-way coaxial	8" / 2-way coaxial
Finish	White	White	White	White	White
Rec. amplifier	20 - 90 W	20 - 100 W	20 - 120 W	20 - 90 W	20 - 120 W
Frequency response	50 Hz - 18 kHz	60 Hz - 18 kHz	50 Hz - 18 kHz	50 Hz - 20 kHz	42 - 20 kHz
Impedance	4 ohm	4 ohm	4 ohm	4 ohm	4 ohm
Outer diameter	240 mm / 9,45"	204 mm / 8,03"	228 mm / 8,98"	210 mm / 8,3"	255 mm / 10"
Installation depth	80 mm / 3,15"	60 mm / 2,36"	65 mm / 2,56"	70 mm / 2,76"	90 mm / 3,54"
Cut out dimension	210 mm / 8,25"	166 mm / 6,53"	192 mm / 7,56"	192 mm / 7,56"	238 mm / 9,37"
Tweeter	25 mm soft dome	16 mm mylar	16 mm mylar	20 mm soft dome	25 mm soft dome

IN-CEILING WITH TEXTILE FRONT



IWX 6.2



IWX 26

The **IWX 6.2** is a unique speaker. To improve the sound we have mounted both the bass driver and the tweeter in a wooden baffle. The oval shape together with the textile grille gives the installation an exclusive look that fits in everywhere.

There are times when you simply can't resist providing the world with better sound.

The **IWX 26** is one of those. The nano plated tweeter provides the better of two worlds: the silk core provides smoothness while the aluminum dust covering provides precision.

IN-CEILING - SINGLE STEREO



IC 236



NEW!
Slim
frame

IC 636

DLS **IC 236** or **IC 636** for roof mount. Two speakers in one!

Connect both stereo channels to a single speaker. The bass driver have dual voice coils and two separate angled tweeters for best stereo image. A speaker in the classical round style. Can be used in most environments. Perfect as extra speaker in small areas like kitchen, bath rooms or small rooms where two separate speaker are difficult to install.

MORE FACTS:

Model	IC236	IC636	IWX6.2	IWX26
Size / type	6,5" / 2-way coaxial	6,5" / 2-way coaxial	6,5" / 2-way	6,5" / 2-way
Finish	White	White	White, textile grille	White, textile grille
Rec. amplifier	20 - 100 W	20 - 120 W	20 - 120 W	20 - 120 W
Frequency response	50 Hz - 18 kHz	50 Hz - 18 kHz	45 Hz - 25 kHz	45 Hz - 25 kHz
Impedance	2 x 4 ohm	2 x 4 ohm	4 ohm	4 ohm
Outer diameter	228 mm / 8,98"	210 mm / 8,3"	335 x 255 mm	315 x 260 mm
Installation depth	75 mm / 3"	82 mm / 3,23"	70 mm / 2,76"	125 mm / 4,92"
Cut out dimension	192 mm / 7,56"	192 mm / 7,56"	284 x 204 mm	260 x 206 mm
Tweeter	2 x 16 mm mylar	2 x 20 mm soft dome	28 mm soft dome	28 mm soft dome

IN-WALL SPEAKERS



IW 8.2



IW 6.2



IWU 6.2

MORE FACTS:

Model	IW8.2	IW6.2	IWU6.2
Size / type	8" / 2-way	6,5" / 2-way	6,5" / 2-way
Finish	White	White	White
Rec. amplifier	20 - 120 W	20 - 90 W	20 - 120 W
Frequency response	42 Hz - 23 kHz	50 Hz - 23 kHz	45 Hz - 25 kHz
Impedance	4 ohm	4 ohm	4 ohm
Outer diameter	360 x 255 mm	305 x 218 mm	305 x 218 mm
Installation depth	93 mm / 3,66"	80 mm / 3,1"	70 mm / 2,76"
Cut out dimension	322 x 220 mm	270 x 183 mm	270 x 183 mm
Tweeter	28 mm soft dome	25 mm soft dome	28 mm soft dome

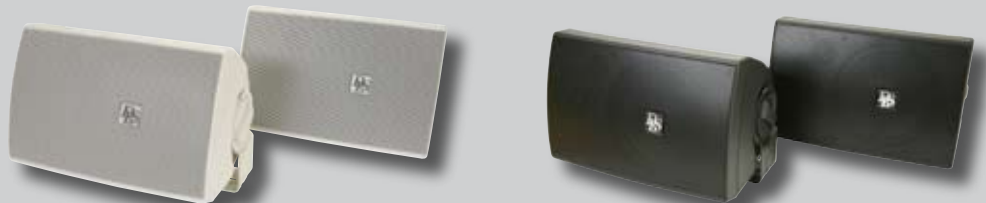
The square IW 6.2, IW 8.2 and IWU6.2 are normally installed in a wall, but you can put them in any other suitable place. These are 2-way component kits with the tweeter separated from the bass/mid-range to provide the best possible sound. We strongly recommend the square In-wall speakers if you're using them in your home cinema system.

ALL WEATHER MULTI-BOX SPEAKERS

Enjoy your favorite music everywhere! DLS all weather speaker boxes can be used wherever you want, on your terrace, by the pool side or in the boat. They are also perfect for shopping malls, coffee shops or restaurants, indoors or outdoors. All models are extremely well-sounding; you will be surprised how well they play all kinds of music.

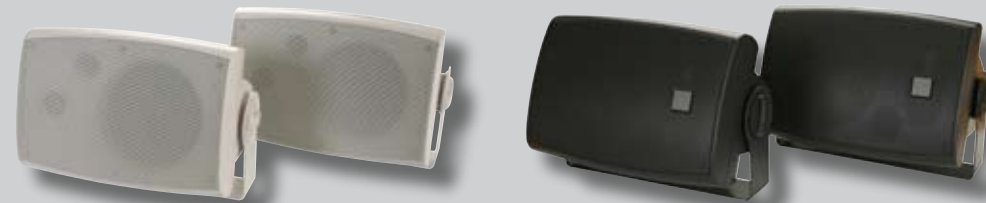
MORE FACTS:

Model	MB5
Speaker type	2-way bass reflex
Impedance	4 ohm
Size of bass driver	5,25" (13 cm)
Tweeter	20 mm / 0,8" soft dome
Nom. power (RMS)	80 Watts RMS
Maximum power	160 Watts
Frequency range	70 Hz-20 kHz
Sensitivity	90 dB / W / m
Temp. range	-20 - +85 degrees C.
Outer size WxHxD	235 x155 x160 mm
Weight	2,5 kg / 5,4 lbs



MORE FACTS:

Model	MBU5
Speaker type	2-way bass reflex
Impedance	4 ohm
Size of bass driver	5,25" (13 cm)
Tweeter	28 mm / 1,1" soft dome
Nom. power (RMS)	100 Watts RMS
Maximum power	200 Watts
Frequency range	60 Hz-20 kHz
Sensitivity	91 dB / W / m
Temp. range	-20 - +85 degrees C.
Outer size WxHxD	300 x190 x165 mm
Weight	4 kg / 9 lbs



MORE FACTS:

Model	MB6
Speaker type	2-way bass reflex
Impedance	4 ohm
Size of bass driver	6,5" (16,5 cm)
Tweeter	25 mm / 1" soft dome
Nom. power (RMS)	110 Watts RMS
Maximum power	220 Watts
Frequency range	55 Hz-20 kHz
Sensitivity	90 dB / W / m
Temp. range	-20 - +85 degrees C.
Outer size WxHxD	285 x170 x178 mm
Weight	3,3 kg / 7,3 lbs



MORE FACTS:

Model	MBU6
Speaker type	2-way bass reflex
Impedance	4 ohm
Size of bass driver	6,5" (16,5 cm)
Tweeter	28 mm / 1,1" soft dome
Nom. power (RMS)	150 Watts RMS
Maximum power	300 Watts
Frequency range	45 Hz-20 kHz
Sensitivity	91 dB / W / m
Temp. range	-20 - +85 degrees C.
Outer size WxHxD	310 x190 x220 mm
Weight	4,3 kg / 9,5 lbs



ACCESSORIES



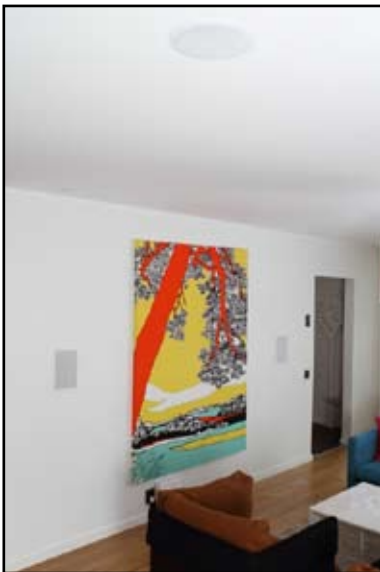
Some models of In-ceiling speakers can also be used in line systems. A 100Volt line transformer can be mounted on the frames of IW126i, IC 426 and IC 428



Professional Hole saws in various sizes for all DLS In-ceiling speakers



Change the metal mesh grilles to new in textile. This will improve the look of the installation, it will give a more exclusive look! The colour is "off-white" and can be cleaned if it becomes dirty.
Two sizes for models: IW428, IW6.2 & IWU6.2



DLS is the link between you and a music experience far beyond the normal. Since DLS was established in 1979 we have developed and produced speakers for music lovers. Over the years, we have won numerous awards for our speaker systems. Fundamental to our success is a passion for music reproduction shared by all the directors of the company. This provides the drive to develop the perfect speaker system.



FOR MORE INFORMATION,
PLEASE CONTACT US AT
INFO@DLS.SE OR VISIT WWW.DLS.SE