

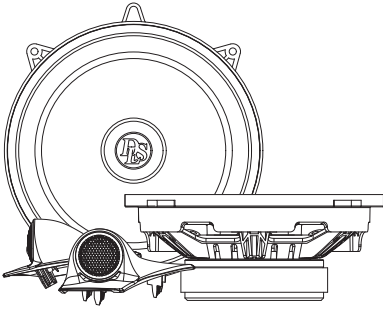
CRPP-MB1.6

User Manual

Mercedes Sprinter



CRUISE



Welcome to DLS!

Thank you for purchasing the DLS Cruise CRPP-MB1.6 component kit. For us, it's all about the sound experience. We care deeply about sound and construction quality. In order for your experience to be as optimal as possible, it is important that you fully read this manual, preferably before you start your installation. Keep the manual in a safe and accessible place for future reference.

Your speakers must be installed correctly in order to work as intended. Make sure you have all necessary tools nearby before starting and that you are completely confident in how to proceed. If you feel the slightest uncertainty; feel free to take the help of an experienced installer or a car audio dealer.

Warranty

This component kit is covered by warranty, depending on the conditions in the country where it is sold. If the speaker is returned for service, please include the original dated receipt with the product.

DECLARATION OF CONFORMITY

DLS plug and play speakers for vehicles are manufactured in accordance with the EU directive EEC 95/54 (72/245/ EEC) and are marked with the approval number. They are also marked in accordance with the WEEE-directive 2012/19/EC. The products are also produced in accordance with the EU RoHS directive 2015/863/EU.

DLS CRUISE CRPP-MB1.6

Content

Welcome	1
Parts Included	2
Pre-installation	2
General Info	2
Installation	2
Tools needed	2
WARNING!	2
Remove door panel	3
Remove OEM speaker	5
Mount DLS speaker	5
Remount door panel	6
Remove OEM tweeter	7
Crossover settings	8
Mount DLS tweeter	9
Mount DLS cover	9
Running-in Time	10
DLS Support	10
Specifications	11
Compatible Car Models	13
Disclaimer	13
Product Markings	14

DLS speakers are engineered by DLS Sweden,
a part of:

Winn Scandinavia AB

Elementvägen 15 - SE-702 27 Örebro - Sweden

Tel: +46 19 20 67 65 - E-mail: info@dls.se

www.dls.se

Designed & Sound tuned in Sweden.



Parts Included

Included products:

2pcs Woofers
2pcs Tweeters
2pcs Crossovers

Included in box:

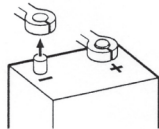
2pcs Sound optimized tweeter brackets
2pcs Cable connector for woofer
2pcs Cable connector for tweeter
8pcs Terminal crimp connectors
4pcs Adhesive foam for wrapping
1pc Pry tool
1pc Manual

Pre-installation

Disconnect Battery

Before you start the process of replacing speakers, disconnect and secure the negative terminal from your battery/power source. This will prevent the risk of damaging yourself or the products.

Place the disconnected terminal in a secure and isolated location away from any possible connection belonging to the battery/power source system.



General Info

Some sound systems may vary in size of the door speaker. Before you start the assembly, make sure that your vehicle has the same size as this kit.

The installation process may vary depending on the car model, factory options and other factors. The approach is similar to all of the described car models. Some screws and clips may be placed differently and depending on if the tweeter is placed in the A-pillar or side mirror, the course of action may vary.

Take care when removing panels, so there will be no marks. Use plastic pry tools to avoid marks on the panels and damaging the plastic clips.

Installation

Tools needed

Bit screwdriver

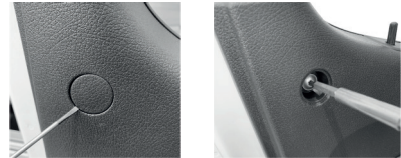
T20/T25/T30 Torx bit
PH1/PH2 Phillips bit
Small flat head screwdriver
Plastic PRY tool (included)

Remove door panel

Start by removing the cover and the screw of the door panel. Use the pry tool or a small flat head screwdriver to remove the round plastic cover.



Use a torx to loosen and remove the screw.



Remove the round plastic cover by using a small flat head screwdriver. Use a torx to loosen and remove the screw.

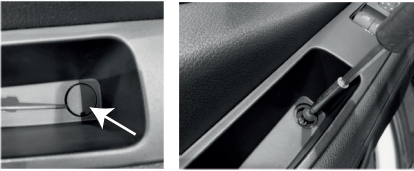




Remove the screw inside the handgrip.



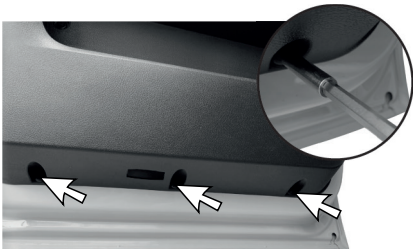
Use a small flat head screwdriver to remove the plastic cover. Be careful and avoid to make any notches. Unscrew the torx.



Unscrew the 2 torx screw in the lower door panel.



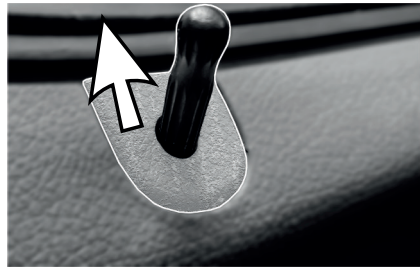
The lowest part of the door is locked by three philips screws (PH1 or PH2) and expansion plugs. If the expansion plugs are broken. Replace them.



To remove the door panel, all clips need to be released. Use the PRY-tool to release the clips marked with the white circles.

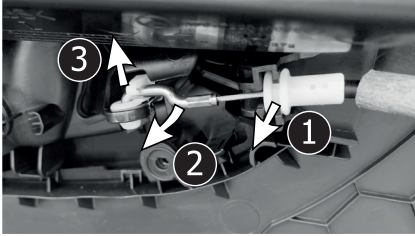


When all clips are released, you need to press out the door pin in the upper area of the trim. Push the pin and the plate in the direction of the window (away from you).





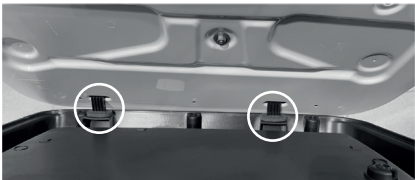
Remove the door panel. Unclip the release cable from the door handle. First lever out the white clip (1). The door release cable is now loose and can be removed from the front turning the cable and unhooking it.



Unplug all electrical and speaker-connections.

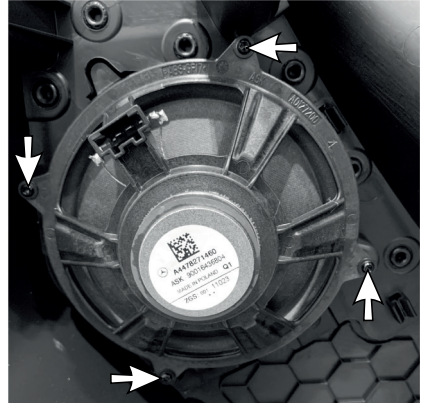


When every clip, lever and electrical connection is unhooked, unhook the door panel from the two lower hooks on the door and lift upwards.



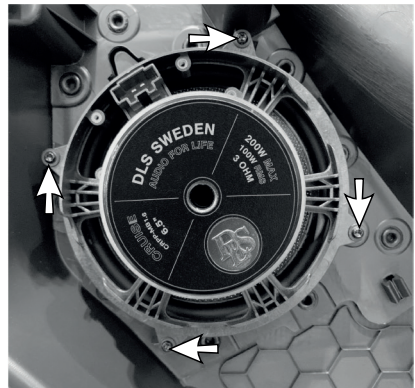
Remove OEM Speaker

Remove the speaker by unscrewing the 4 screws.



Mount DLS Speaker

Mount the new DLS speakers, using the OEM screws. Make sure the speaker is properly mounted and fits nicely.



Finally, reconnect the speaker connector to the DLS woofer.



Remount Door Panel

Start the reassembly of the door panels. Follow this manual in reverse order.

Reconnect all cables. Connect all plugs to the door panel, reconnect the unlocking device and the electrical connectors then place the door cover so that the two lower hooks are in place at the bottom. Push the door panel in place so that the window seal is in the right place at the top.

Make sure the clips are in place and can engage. Give the door panel a push by the hand to attach to the clips. Mount and fasten all screws to the correct places. Make sure that no screws or clips are left over.

Hint!

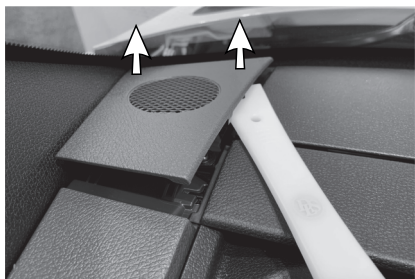
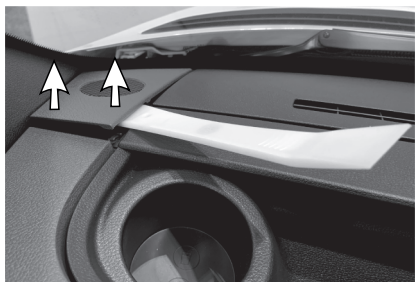
Take care when installing the door panel, to make sure no wires get squeezed and/or pressed against the midrange speaker when it's installed in the door frame.





Remove OEM Tweeter

Use the Pry tool to remove the cover of the tweeter on both the driver and passenger side. Carefully lever the trim upwards, the cover is secured with clips.



When all clips are loose, remove the cover.

Use a flat head screw driver to extract the tweeter of its holder in the dashboard.



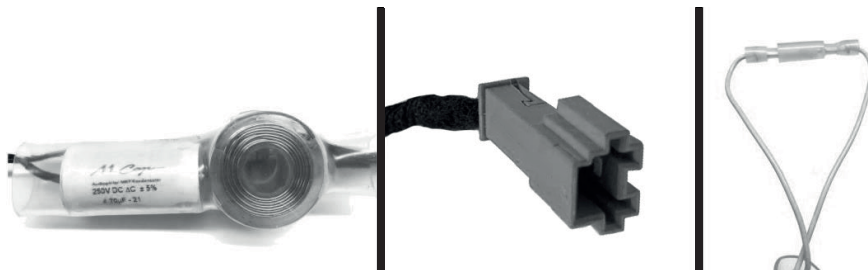
Then remove the original connection of the tweeter. Press the release button to unplug the connector.





Crossover Settings

Connect the crossover using the factory connector. Use the remaining wrapping foam to secure the crossover and cables.

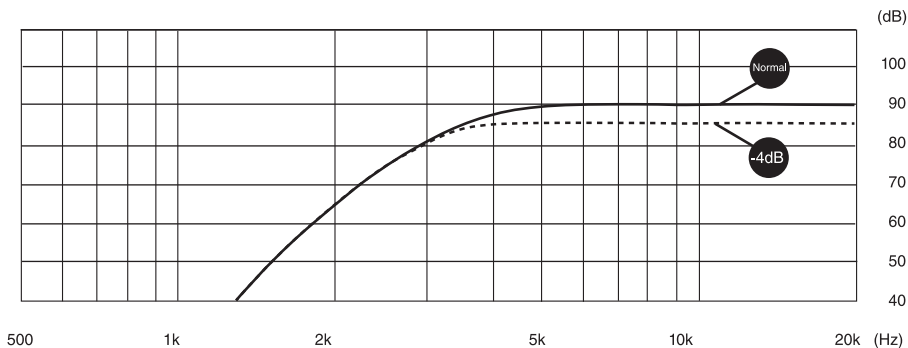


Tweeter Level

The yellow cable loop is a tweeter level selection, enabling fine tuning of the high-frequency sound.

- Closed loop = -4dB (Shown in the picture below)
- Open loop = Normal (Shown in the picture below)

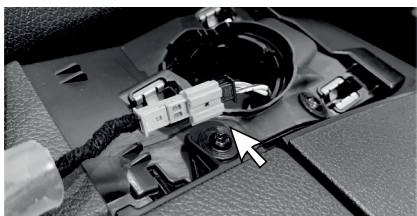
By closing the loop as shown in the picture above, the tweeter gets less power in the higher frequencies, making the sound seem less intense. We recommend using the closed loop setup in installations where the factory tweeters are angled towards the listening position.





Mount DLS tweeter

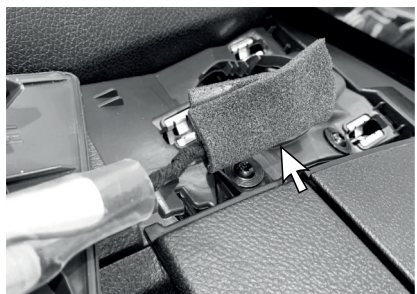
Connect the new DLS tweeter to the car's OEM connector. Make sure the connectors click together.



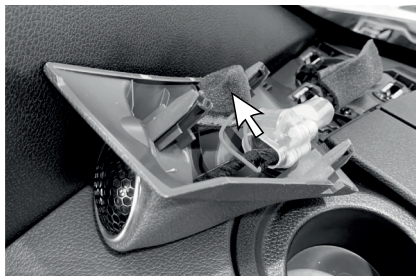
Take one of the adhesive foams and cut in half according to the picture below. Wrap one part around the connectors, and one part around the yellow tweeter-loop cable, to avoid rattle and noise.



Tweeter connectors wrapped in adhesive foam.



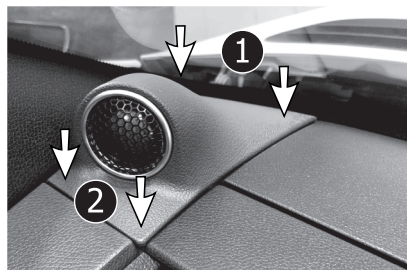
Tweeter-loop cable wrapped in adhesive foam



Mount DLS cover

Hide the crossover in the tweeter slot, inside the dashboard.

Press down the new tweeter cover in an angle. Start at the window. Make sure that all clips engage properly.



Now do the same procedure on the passenger side.



Running-in Time

The component kit will perform at it's best after 15-20 hours of running-in time. The running-in time can be played with a tone, or by just playing regular music.

Start your listening at a moderate level and increase the volume as time goes by. After 15-20 hours of listening the performance and characteristics will be as intended.



DLS Support

For technical assistance, ask your car audio dealer where the product was sold or the distributor in your country. You can always contact the DLS Support in Sweden via e-mail: info@dls.se. For more information regarding DLS and our products, visit our website: www.dls.se. We follow a policy of continuous advancement in development. For this reason, all or part of specifications and designs may be changed without prior notice.



Specifications

DLS Cruise CRPP-MB1.6 Component Kit

Technical Specifications

Size	6.5" / 165 mm woofer and 1" / 25 mm tweeter
RMS Power	100 W
MAX Power	200 W
Impedance	3 Ohm
Sensitivity	90 dB 1W/1m
Freq. range	60 Hz - 25 kHz
Crossover	4.8 kHz 12 dB / Oct with Mundorf® caps

DLS Cruise CRPP-MB1.6 Woofer

Technical Specifications

Size	6.5" / 165 mm
RMS Power	100 W
MAX Power	200 W
Impedance	3 Ohm
Freq. range	60 Hz - 5 kHz
Voice Coil Size	1" / 25 mm
Voice Coil Material	CCAW voice coil with Kapton® former
Basket	Glass Fiber Reinforced ABS
Magnet	Optimized hybrid neo/ferrite magnet
Cone	Glass Fiber
Suspension	Rubber

Electro-Acoustic Parameters

Re	2.6 ohm
Fs	79.9 Hz
Mms	14.50 gr
Cms	0.259
Vas	6.99 L
Qts	0.68
Qes	0.75
Qms	7.09
Bl	5.12 Tm
Spl	89.2 dB 1W/1m
Sd	139 cm ²

DLS Cruise CRPP-MB1.6 Tweeter

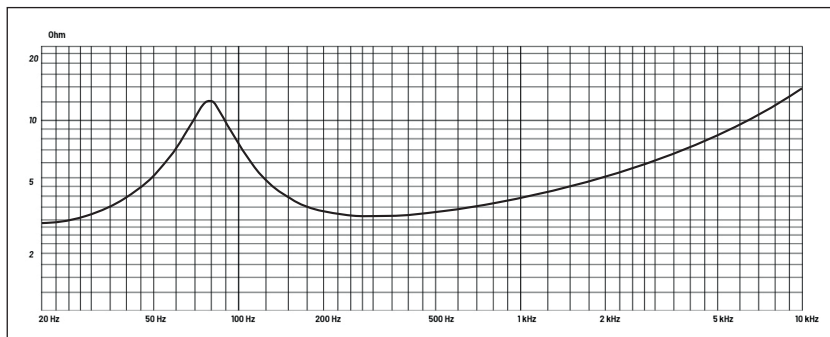
Technical Specifications

Size	1" / 25.4 mm
RMS Power	50 W
MAX Power	100 W
Impedance	4 Ohm
Freq. range	2 kHz - 25 kHz
Voice Coil Material	CCAW voice coil with aluminum former
Frame	Glass Fiber Reinforced ABS
Magnet	Neodymium with copper shorting ring
Cone	Natural silk dome

Electro-Acoustic Parameters

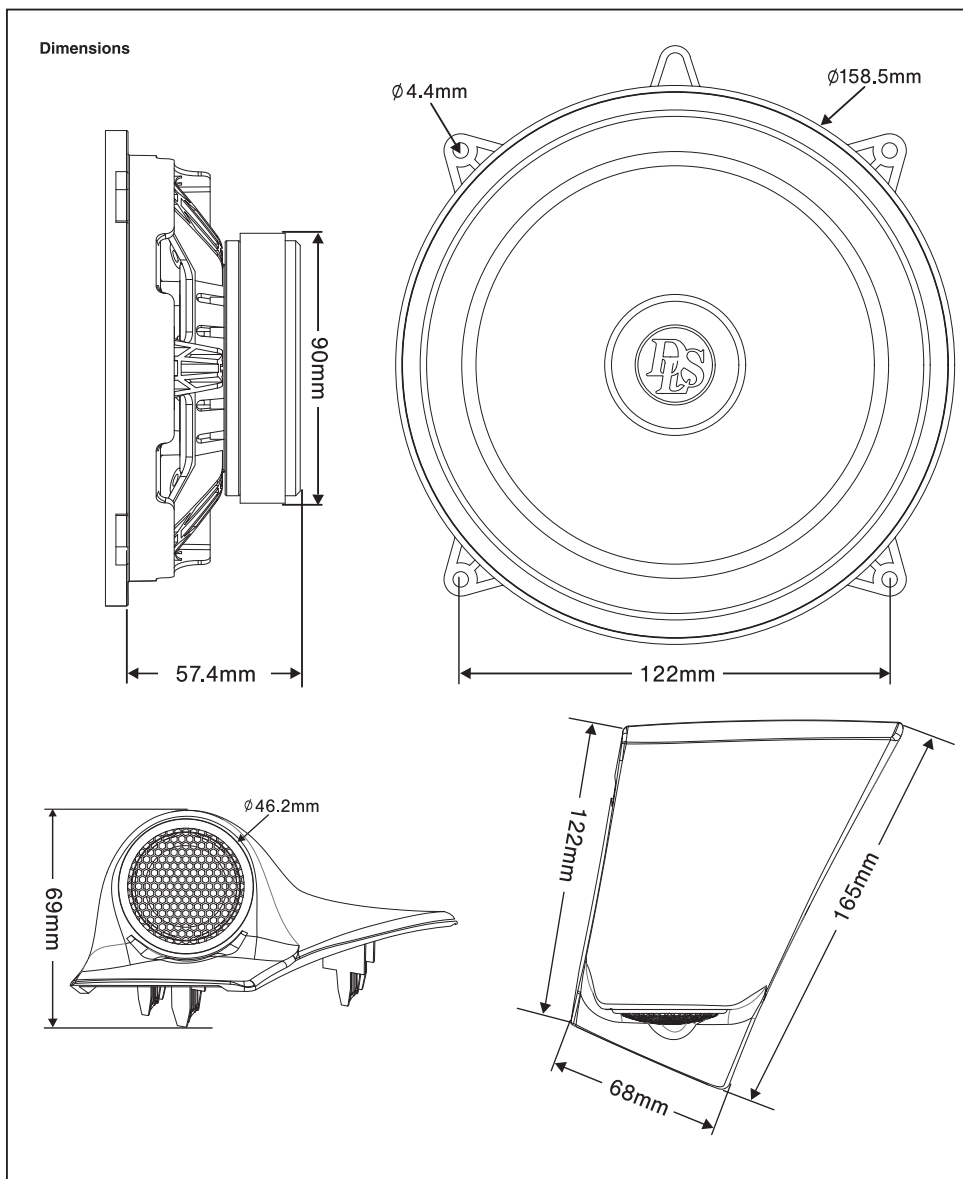
Re	3.5 Ohm
Fs	1990 Hz
SPL	94 dB 1W/1m

Impedance vs. Frequency





Specifications





Compatible Car Models

DLS Cruise CRPP-MB1.6

Make	Model	Year	Front speaker
Mercedes	Sprinter W907	2018-	CRPP-MB1.6*
Mercedes	Sprinter W910	2018-	CRPP-MB1.6*

*CRPP-MB1.6 woofers fit in the front door speaker locations.

Disclaimer

CRPP-MB1.6 is a component kit that has been developed to be installed in the front doors and the dashboard. For more information, visit www.dls.se or consult your local DLS dealer.



Product Markings



The crossed-out wheellie bin symbol means that the product, literature and packaging included must be taken to separate collection at the end of their working life. Do not dispose of these products as unsorted municipal waste: take them for recycling. For info on your nearest recycling point, check with your local waste authority.



This product has been granted with the CE certification mark to show that the product follows the health, safety, and environmental protection standards for products sold within the European Economic Area (EEA).



DLS products comply with the relevant provisions of the RoHS Directive for the European Union. In common with all Electrical and Electronic Equipment (EEE) the product should not be disposed of as household waste. Alternative arrangements may apply in other jurisdictions.



DLS is a global partner of the European Mobile Media Association, an organisation that focus on promoting the custom made mobile media installations to consumers.

We follow a policy of continuous advancement in development. For this reason all or part of specifications & designs may be changed without prior notice. We reserve for possible typos, factual or numeric errors that may have been printed on any products, package designs, user manuals and/or other included accessories.



CRUISE **E**